

INTERIOR DESIGN PORTFOLIO

# CLAIRE DEVORE

Designing spaces that shape how  
people connect, feel, and recover

M.A. INTERIOR DESIGN, SCAD GRADUATE 2025



EXPLORE WORK

## DESIGN PHILOSOPHY

Spaces shaped  
by how people  
*feel*

I just finished my M.A. at SCAD, where my thesis looked at how the physical setup of a space (the lighting, the materials, how close you sit to someone) actually changes how people feel in it. That research drives everything I do, especially in hospitality.

---

## EDUCATION

Savannah College of Art and Design

M.A. Interior Design, Class of 2025. Achievement Scholarship

## THESIS

How spatial intimacy affects emotional response in hospitality settings

## AFFILIATIONS

ASID, AIA, IDS, ICAA, Humble Design Associate Board Member

## TOOLS

Revit, SketchUp, Enscape, Adobe CC, Figma

MY APPROACH

## From Research to Realization

This is the process I followed for both projects at SCAD. Each one went from research all the way through design development.

### 01

#### PROGRAMMING & RESEARCH

User observation, precedent studies, and behavioral mapping to build the project brief.

### 02

#### CONCEPT DEVELOPMENT

Mood boards, material explorations, and a concept narrative that ties back to the research.

### 03

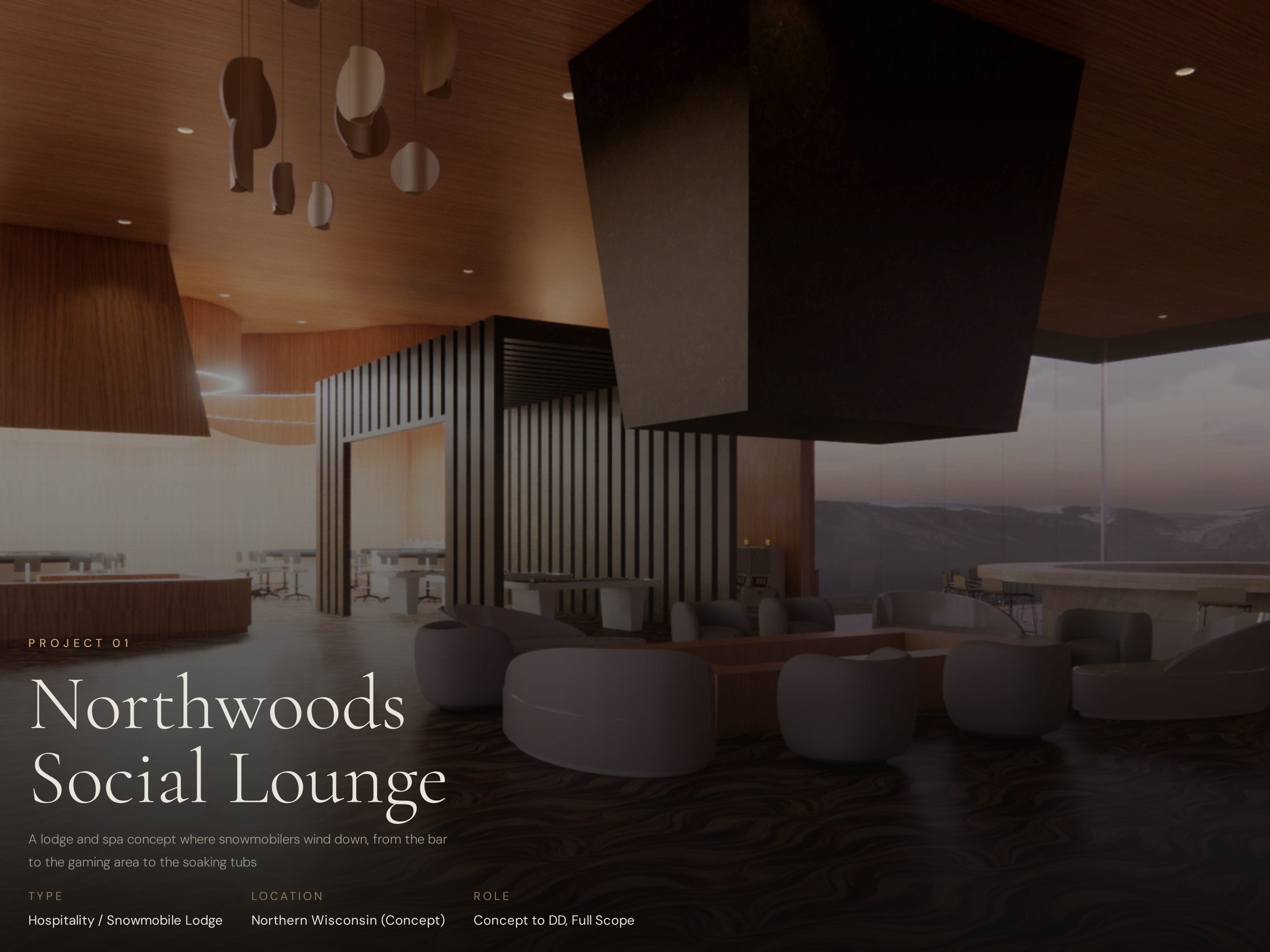
#### SCHEMATIC DESIGN

Space planning, zoning, circulation, and sightline studies. Lots of iterations and critiques here.

### 04

#### DESIGN DEVELOPMENT

Material specs, lighting plans, FF&E selections, and final renderings in Revit and Enscape.



PROJECT 01

# Northwoods Social Lounge

A lodge and spa concept where snowmobilers wind down, from the bar to the gaming area to the soaking tubs

TYPE	LOCATION	ROLE
Hospitality / Snowmobile Lodge	Northern Wisconsin (Concept)	Concept to DD, Full Scope

## CONCEPT DEVELOPMENT

# From Nostalgia to Narrative

Wisconsin supper clubs are nostalgic. You show up, you eat, you stay a while. I wanted to play on that feeling here, balancing old and modern entertainment. The spa offers recovery, but the bar, the games, the social spaces bring indulgence. Wellness can be both. I mapped the space around how a guest's energy shifts after a day outside:

01 Active 02 Social 03 Relax 04 Recover

Dark granite + warm wood layering

Patterned carpet defining activity zones

Organic ceramic soaking tub forms

Vintage signage for cultural authenticity

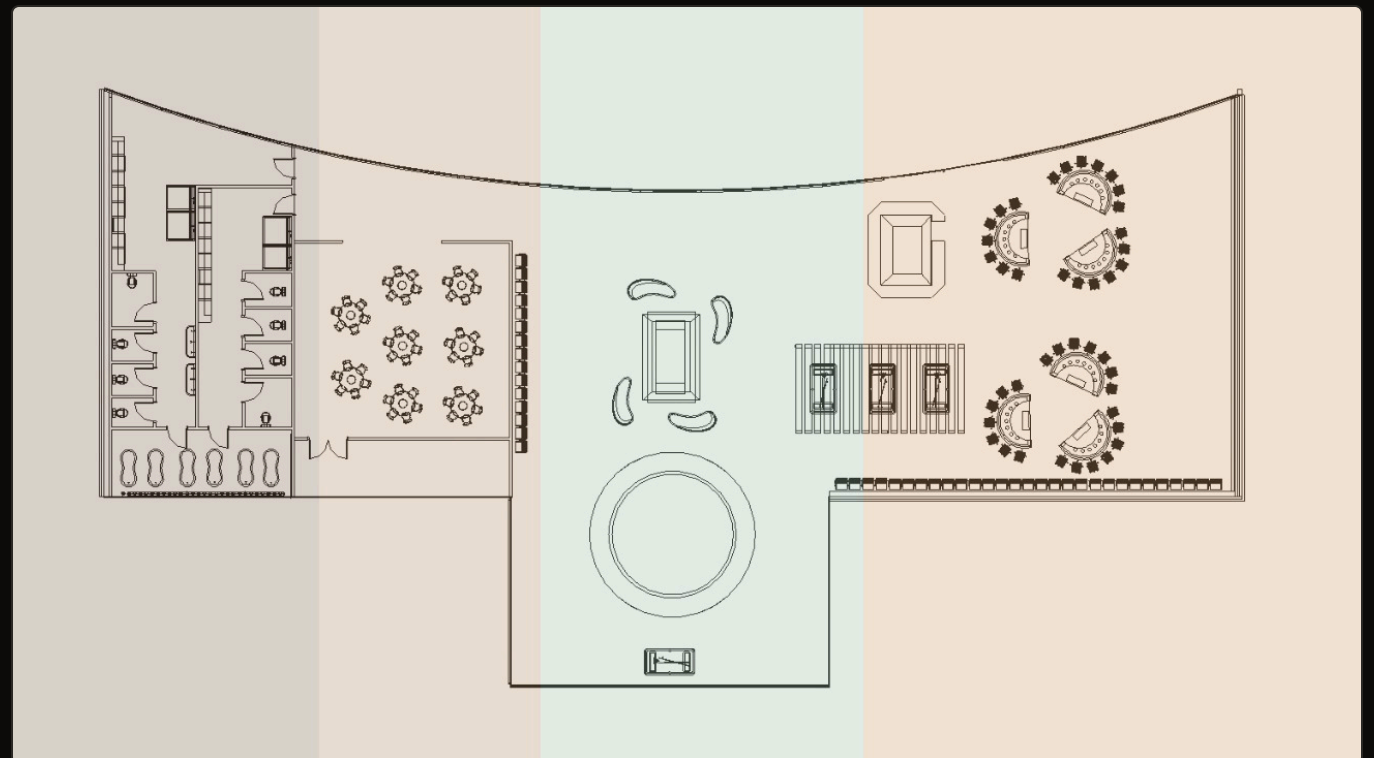


## SCHEMATIC DESIGN

# Spatial Organization & Zoning

The louder, more active spaces are at the center: bar, gaming, pool tables. As you move outward toward the spa wing, things get quieter and more enclosed.

- Spa & Recovery
- Restaurant
- Bar, Entry & Gathering
- Gaming & Social



DESIGN DEVELOPMENT

## Gaming & Social Spatial Experience

Each zone has its own ceiling treatment and furniture layout so you feel the shift between areas even though it's one open floor plan.



DESIGN DEVELOPMENT

## Spa & Recovery

This wing is all about winding down. Lower ceilings, warmer materials, and more enclosed spaces.



## MATERIAL STRATEGY

# Material Selections

Everything needed to feel like it belonged in Northern Wisconsin but also hold up to heavy winter traffic. Wet boots, snow gear, all of it.



### PRIMARY WOOD

White Oak planking and slat screens, wire-brushed finish for texture and durability

### FLOORING

Patterned contract carpet in social zones; porcelain tile with radiant heat in spa areas

### STONE

Honed travertine on spa walls and soaking tub surrounds; limestone at bar countertops

### SEATING

High-performance Crypton upholstery on lounge seating; molded polymer for gaming zones



PROJECT 02

# The Date Bar

My thesis project. A coffee-to-wine bar designed around how spatial design can help women feel safer on first dates

TYPE	LOCATION	ROLE
Hospitality / Coffee & Wine Bar	Tampa, Florida (Concept)	Research-Led, Full Scope Design

## RESEARCH & CONCEPT

# Intimacy Through Materiality

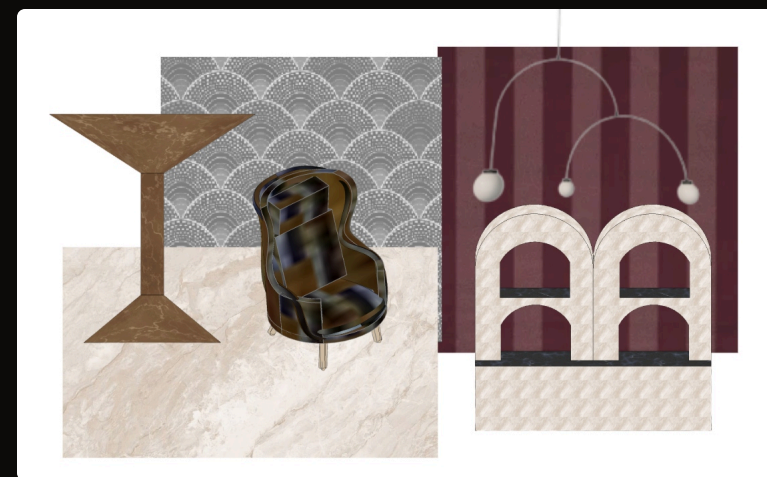
My research started with women's online accounts of feeling safe or unsafe on first dates, what helped, what didn't. I paired that with proxemics research to understand how spatial setups affect comfort. That's what drove the material choices: matte surfaces that absorb light instead of bouncing it around, arched geometry to soften edges, and a burgundy and marble palette.

Warm, indirect lighting for facial comfort

Curved geometry for soft spatial boundaries

Marble + bronze table details

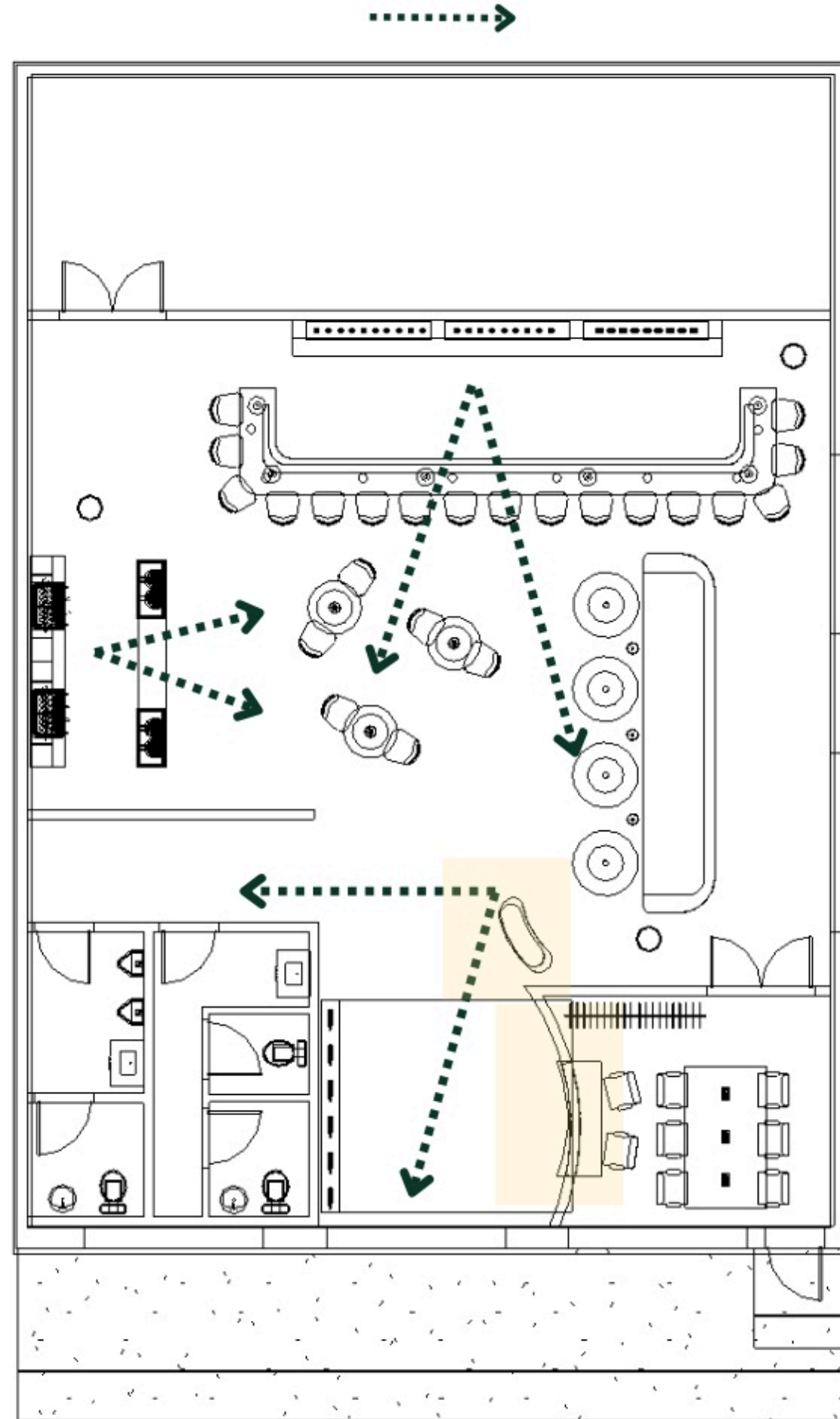
Arched alcoves with pendant lighting



SCHEMATIC DESIGN

## Sightlines & Perceived Safety

This is a first-date spot, so women feeling safe matters. The arrows show where employees have clear sightlines to guest seating and common areas. Even in the more private booths and alcoves, staff can still see you, so you never feel totally isolated with a stranger. That balance between intimacy and safety was the biggest driver of the floor plan.



DESIGN DEVELOPMENT

## Lighting & Atmosphere

No harsh overhead lighting anywhere. Pendants at tables and wall washes keep faces lit softly so people actually look good and feel comfortable.



## MATERIAL & LIGHTING STRATEGY

# Materials & Lighting

At eye level, everything is matte or textured. No shiny surfaces bouncing light into your face. It keeps the whole room feeling warm and easy to be in.

### WALL TREATMENT

Patterned acoustic tile in warm gold tones; arched alcoves with recessed LED cove lighting

### LIGHTING

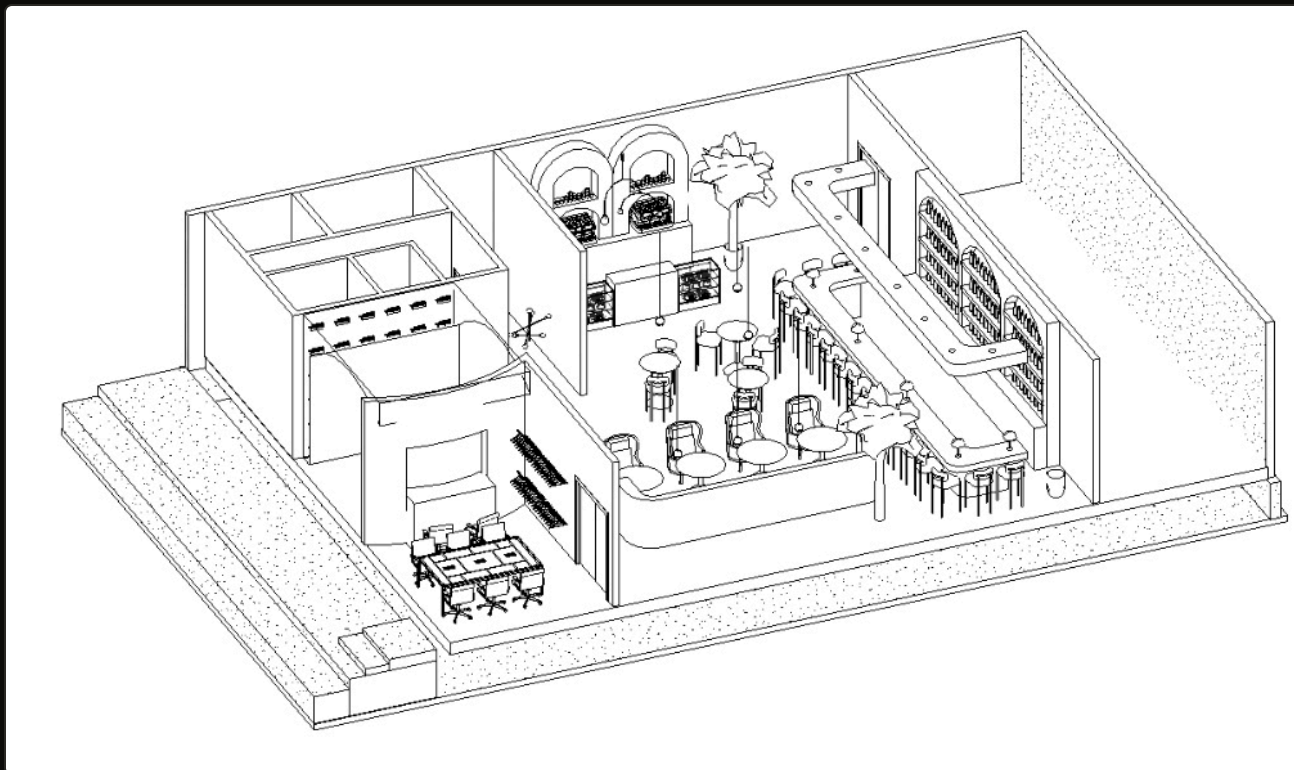
2700K ambient throughout; adjustable pendants at tables; concealed wall wash for soft vertical illumination

### SEATING

Sculptural geometric bar stools; deep curved booth banquettes in rich velvet; loose two-tops for flexible pairing

### FLOORING

Terrazzo at entry transition; engineered hardwood in dining zones for warmth and acoustic softening





PROJECT 03

# Humble Design

Furnishing and designing homes for families transitioning out of homelessness through Humble Design Chicago

TYPE

Community / Residential Installation

LOCATION

Chicago, Illinois

ROLE

Associate Board Member & Design Volunteer

IMPACT

## Before & After Transformation

We work with donated furniture and decor to fully furnish a family's home in one day. I focus on making each room feel pulled together and personal, not just filled with stuff but actually thought through for the people living there.



IMPACT

## Before & After Transformation

We work with donated furniture and decor to fully furnish a family's home in one day. I focus on making each room feel pulled together and personal, not just filled with stuff but actually thought through for the people living there.



LET'S CONNECT

EMAIL

[claire.devore@outlook.com](mailto:claire.devore@outlook.com)

PHONE

(815) 403-8099

LINKEDIN

[linkedin.com/in/clairedvore](https://www.linkedin.com/in/clairedvore)

ASID MEMBER — AIA MEMBER — IDS MEMBER — ICAA MEMBER