

INTERIOR DESIGN

PORTFOLIO

CLAIRE DEVORE
MASTER OF ARTS IN INTERIOR DESIGN – GRADUATE STUDENT
2026



CLAIRE DEVORE

claire.devore@outlook.com | 8154038099 | [LinkedIn Profile](#) | Sarasota, FL

EDUCATION

Savannah College of Art and Design (SCAD)

Master of Arts: InteriorDesign | SCAD Achievement Grad Scholarship Recipient

RELEVANT EXPERIENCE

Student – Graduate Interior Designer | SCAD Projects & Research | 2024 – 2026

- Developed full interior project concepts from programming through schematic development and design development.
- Produced renderings, diagrams, concept boards, and research-backed design narratives.
- Created space plans for hospitality, workplace, retail, and healthcare environments.
- Coordinated digital assets, schedules, and workflows across multiple teams.
- Assisted with residential design planning, including kitchens, layouts, materials, and cabinetry systems.
- Created branded presentations, storyboards, and concept packages using Adobe Suite and Figma.
- Produced narrative videos and motion graphics to communicate design intent.

LEADERSHIP EXPERIENCE

- ASID National Awards & Recognition Committee, Member at Large, Support rubric development, award programming, and national-level initiatives.
- Humble Design Chicago, Associate Board Member

SOFTWARE

- Revit
- SketchUp
- Enscape
- Adobe CC (Photoshop, Illustrator, InDesign, Premiere Pro, After Effects)
- Figma

CERTIFICATIONS & LICENSES

Adobe Certified Professional Photoshop

MEMBERSHIPS

- American Society of Interior Designers (ASID) Member ID: 2063483
- Interior Design Society (IDS) Member ID: 89667115
- River North Design District Member
- Institute of Classical Architecture & Art (ICAA) Member

ABOUT ME

I am an emerging interior designer with a background in research-driven design, space planning, and digital modeling. I recently completed a Master of Arts in Interior Design at Savannah College of Art and Design, with a focus on translating human behavior and emotional experience into spatial design.

My previous professional experience in risk management informs my approach to design through organization, attention to detail, and analytical problem-solving. I am particularly interested in hospitality and experiential environments, where layout, lighting, and materiality shape how people feel and interact. I strive to create spaces that are both visually refined and human-centered.

PROJECTS

01 NORTHWOODS SOCIAL LOUNGE



02 THE DATE BAR



01 Northwoods Social Lounge

Ride-in/out Snowmobile Lodge Prototype for Social Gathering and Relaxation



Project Type
Hospitality — Snowmobile Lodge

Location
Northern Wisconsin (Concept)

Software
Revit, Enscape

My Role
Concept development | Space planning | Material selection | Interior architecture | 3D modeling + rendering

CONCEPT

Inspired by the nostalgia of Wisconsin supper clubs and the energy of casual gaming, this lodge blends warm regional materials with contemporary entertainment. Guests ride in directly from the trails, gather around fire features, enjoy dining, and transition into spa-style recovery spaces.

ACTIVE → SOCIAL → RELAX → RECOVER

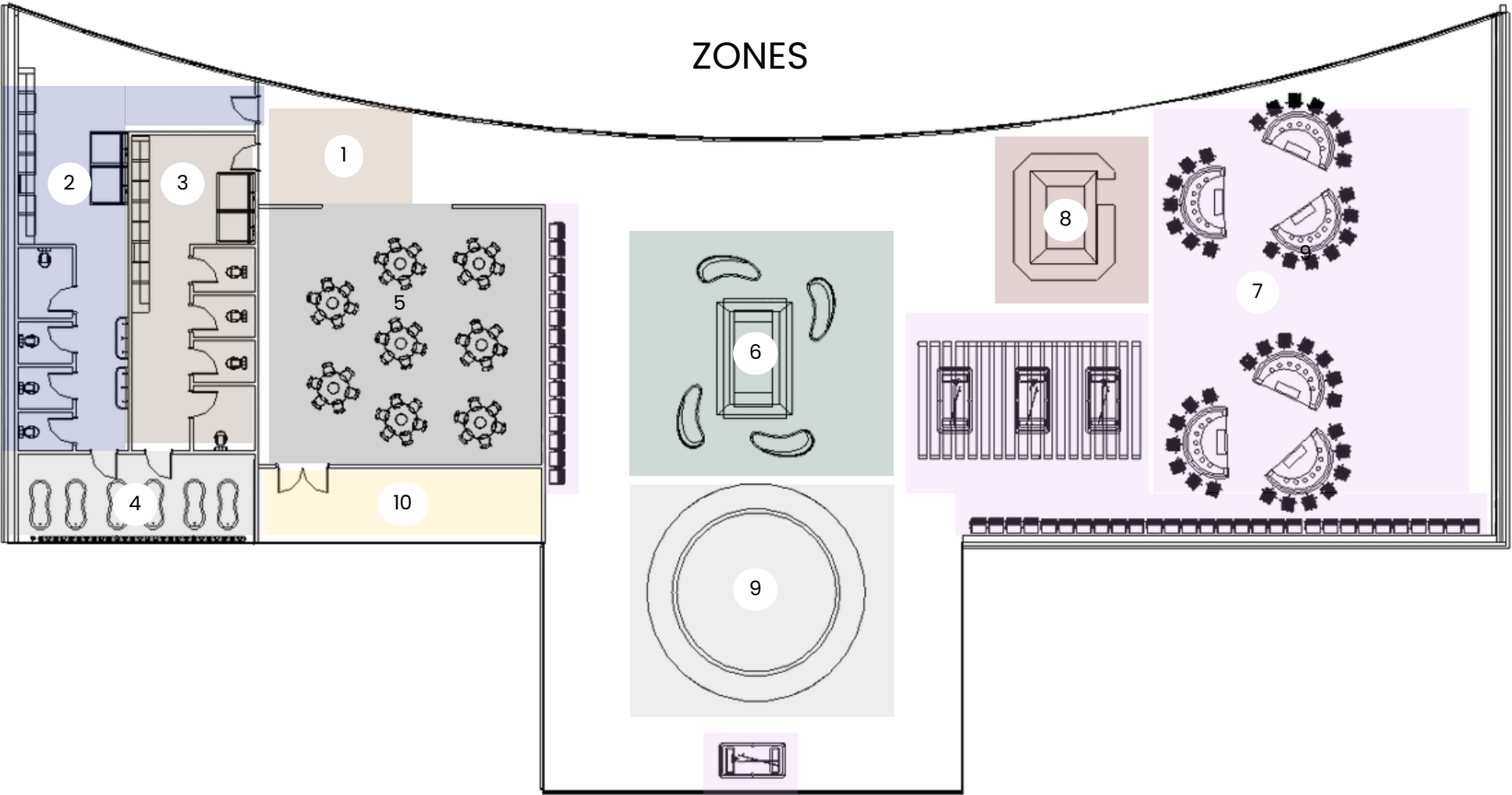


MOODBOARD



Warm woods and textured materials
Durable finishes for heavy winter use
Layered lighting and fire features
Social seating and lounge zones

FLOOR PLAN

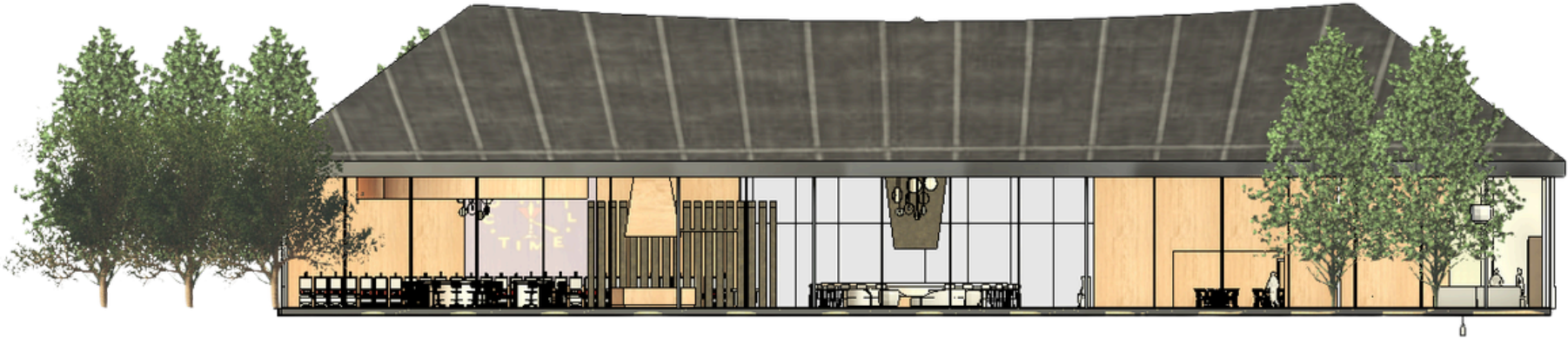


- 1 Entry
- 2 Women's Lounge
- 3 Men's Lounge
- 4 Spa/Recovery
- 5 Restaurant
- 6 Lounge Area
- 7 Gaming
- 8 Cashier
- 9 Bar
- 10 Back of House

The lodge is organized around a central gathering zone that allows guests to orient themselves immediately upon entering. Circulation paths are kept clear to accommodate winter gear and to support movement between activity areas and quieter spaces.

Active spaces are positioned near the center of the lodge, while spa and recovery areas are located toward the perimeter to create a more relaxed atmosphere while maintaining visual connection to the main social areas.

Sightlines across the space improve wayfinding and staff visibility.



GAMING & SOCIAL SPATIAL EXPERIENCE



GAMING



LOBBY BAR



POOL TABLE ROOM

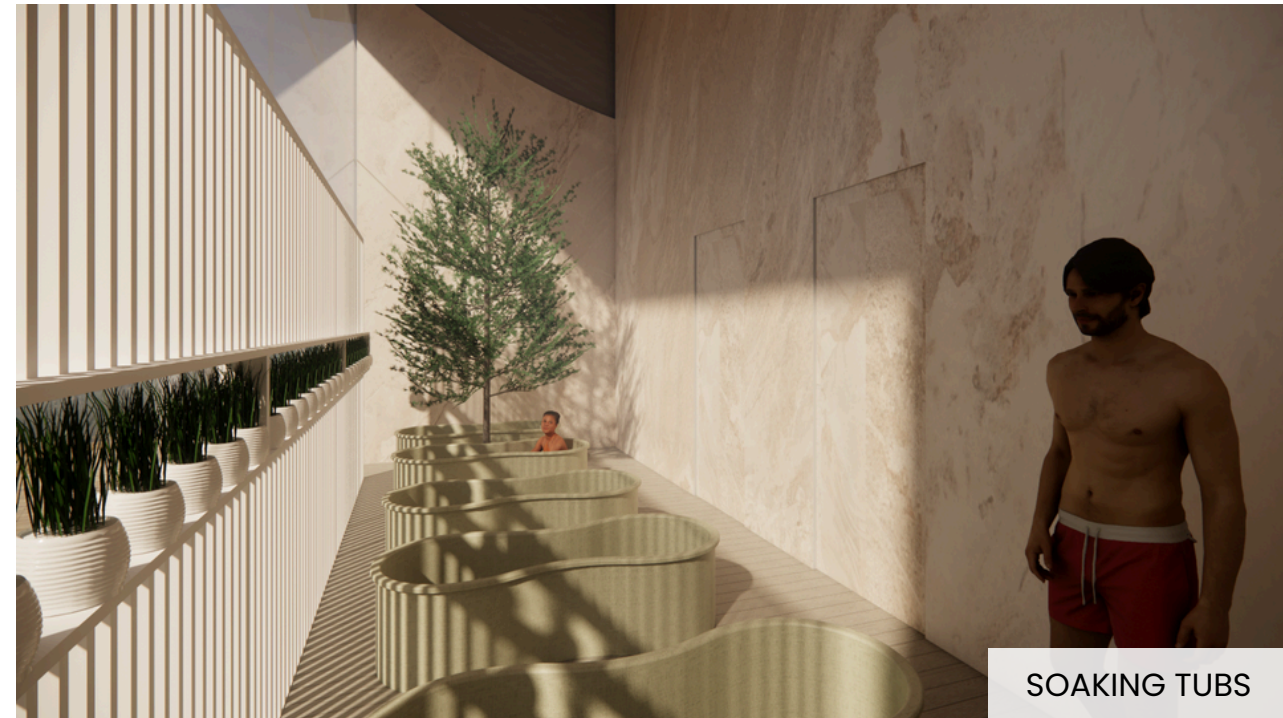


FIREPLACE / LOUNGE

The gaming and social areas are designed to feel energetic and immersive while maintaining **clear circulation** and **visibility**. Furniture layouts and ceiling features help define zones while preserving an open floor plan.

Lighting is brighter and more dynamic in these areas to **support activity** and **interaction**.

SPA & RECOVERY



Spa and recovery areas provide a **contrast** to the active social zones of the lodge. **Softer lighting, natural textures, and more enclosed** spatial conditions create a quieter environment that encourages relaxation after outdoor activity.

Material selections emphasize warmth, comfort, and durability, supporting both **function** and **atmosphere**.

02 The Date Bar

Wine and Coffee Bar Prototype for Emotional Comfort



Project Type
Hospitality — Coffee and Wine Bar

Location
Tampa, Florida (Concept)

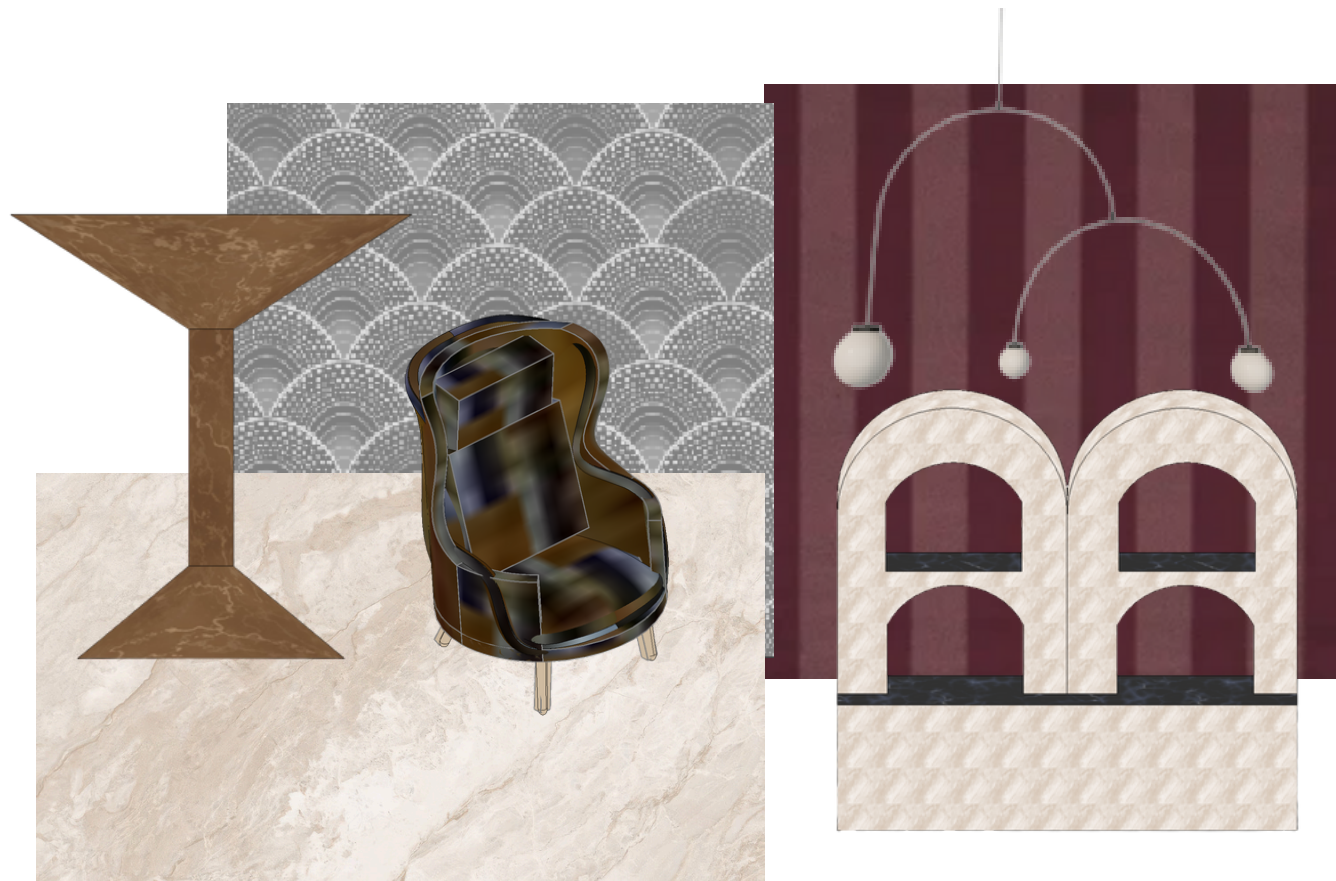
Software
Revit, Enscape

My Role
Concept development | Space planning | Material selection | Interior architecture | 3D modeling + rendering

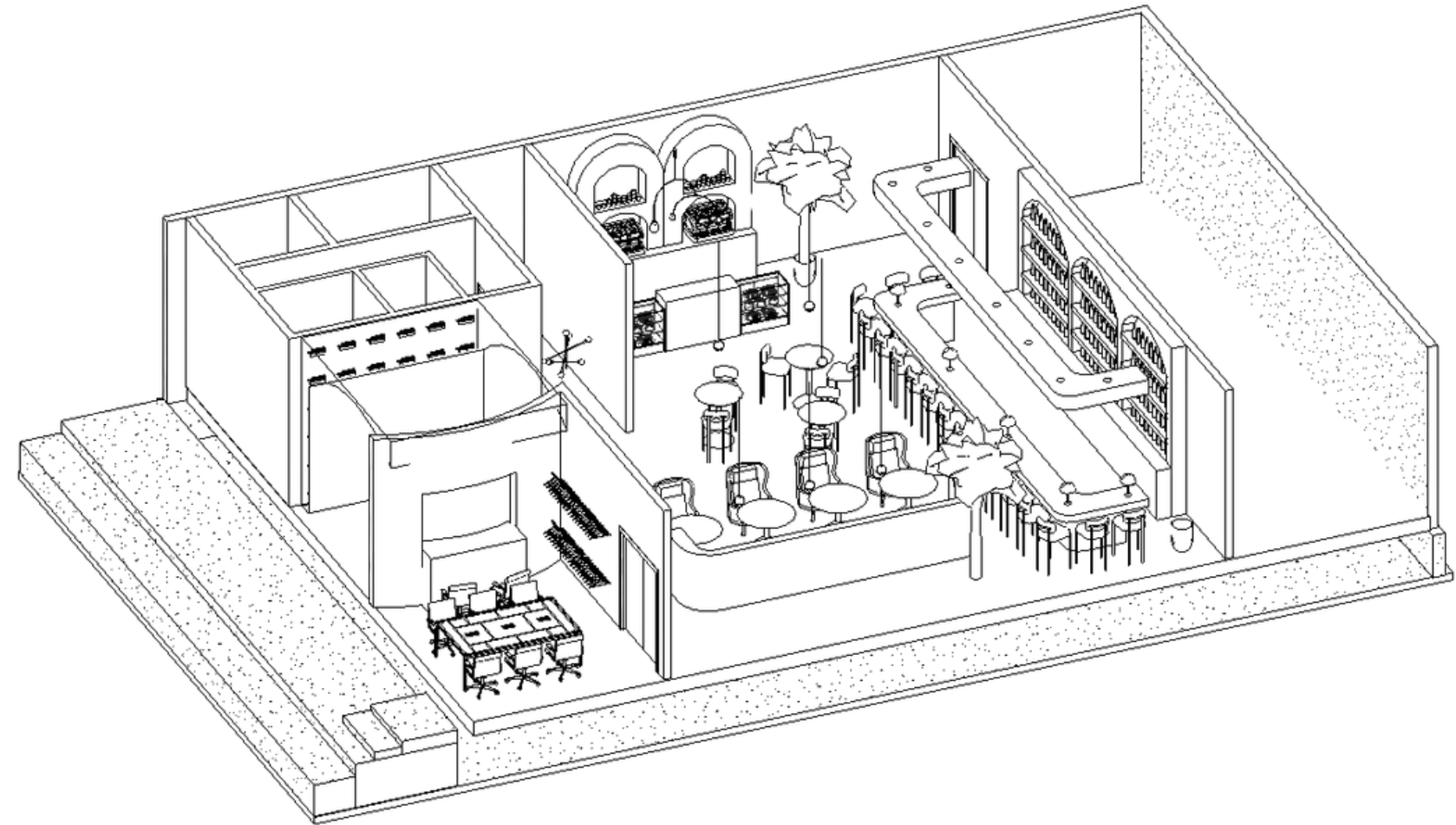
CONCEPT

Modern dating environments often prioritize atmosphere over emotional comfort. This project translates research on visibility, control, and spatial legibility into a casual wine bar designed to support low-pressure social interaction. The design prioritizes clear sightlines, flexible seating, and warm lighting to allow guests to choose their level of intimacy and engagement.

MOODBOARD

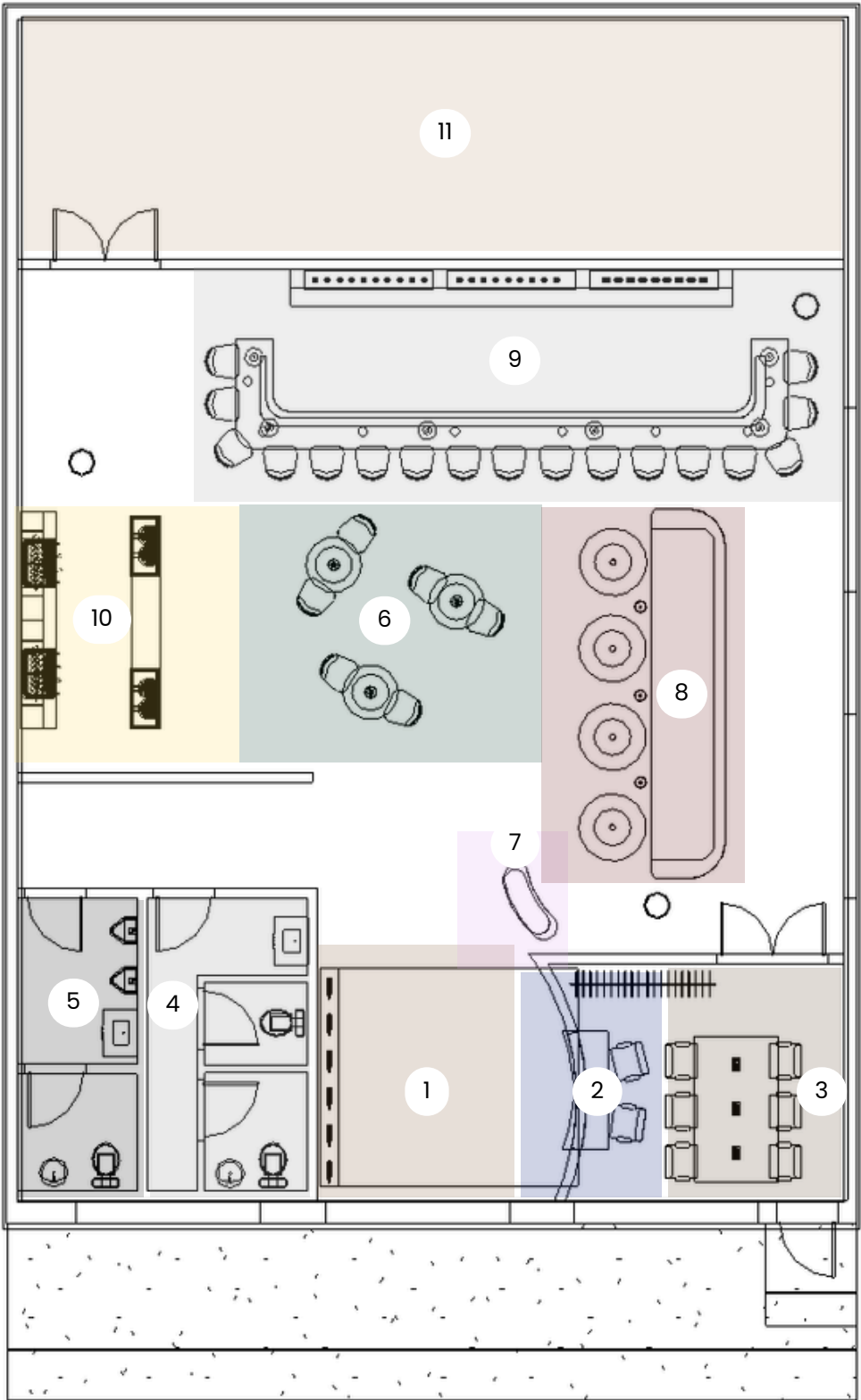


Warm, indirect lighting
Curved geometry for soft boundaries
Casual seating scale



FLOOR PLAN

ZONES

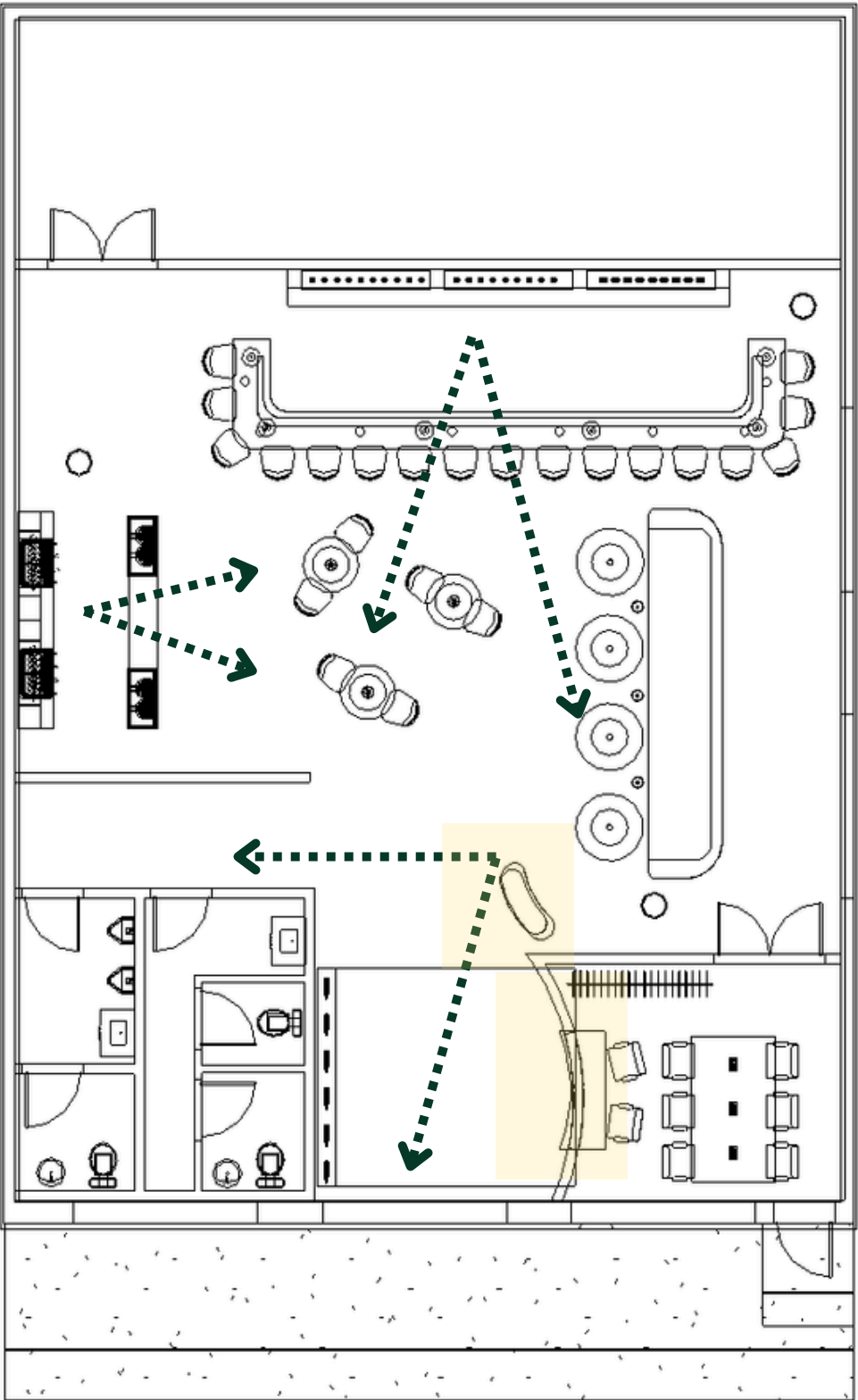


- 1 Entry
- 2 Coat Check
- 3 Employee Break Room
- 4 Women's Restroom
- 5 Men's Restroom
- 6 Loose two-top seating
- 7 Hostess Stand
- 8 Booth seating
- 9 Bar
- 10 Coffee Bar
- 11 Back of house

The layout is organized as a series of open zones rather than enclosed rooms, allowing guests to read the space immediately upon entry and select seating based on **comfort** and **desired interaction level**. Seating is organized to maximize choice and visual clarity. Small tables dominate the plan to reduce perceived commitment and allow for **easy exits**.

SIGHTLINES & SEATING

.....➔
Employee Sightlines



Staff visibility is concentrated at key points of arrival and movement, allowing guests to remain within sight of employees throughout most of the space.

The host stand and coat check are positioned at the entrance to establish immediate staff presence. The women's restroom is located directly across from the host stand to **increase visibility** and **perceived safety** along this path.

LIGHTING & ATMOSPHERE



Materials were selected to balance visual **richness** with emotional **calm**, avoiding reflective surfaces at eye level and emphasizing **warm, tactile** finishes.

Lighting is layered to avoid harsh overhead exposure. Pendants and wall washes provide **warm, diffuse light** that supports facial **comfort** and **relaxed** conversation.

THANK YOU

CLAIRE DEVORE

CLAIRE.DEVORE@OUTLOOK.COM

(815) 403-8099

[LINKEDIN PROFILE](#)